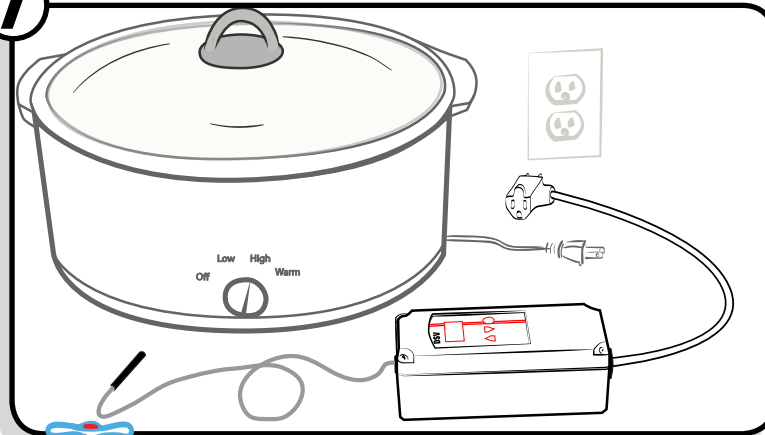


Dorkfood DSV™ temperature controller

Sous-vide Quick Start Guide

1

Place DSV and water-bath on kitchen counter.



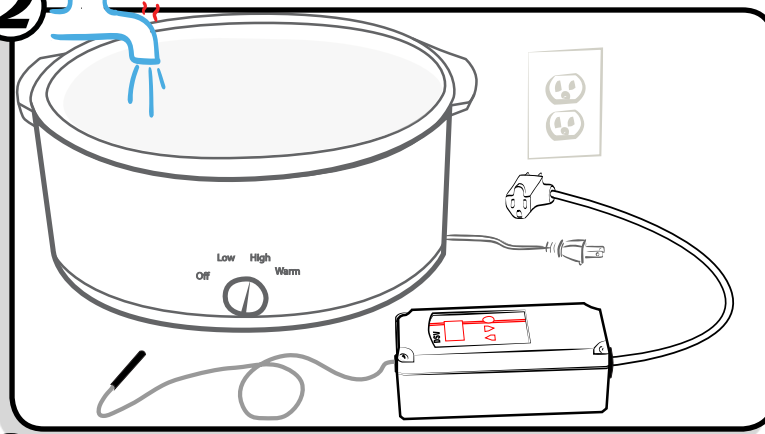
Note:

The water-bath pictured in these instructions is a standard slow-cooker. Visit Dorkfood.com to learn about other acceptable options.

2

Remove water-bath lid.

Fill water-bath with hot water.



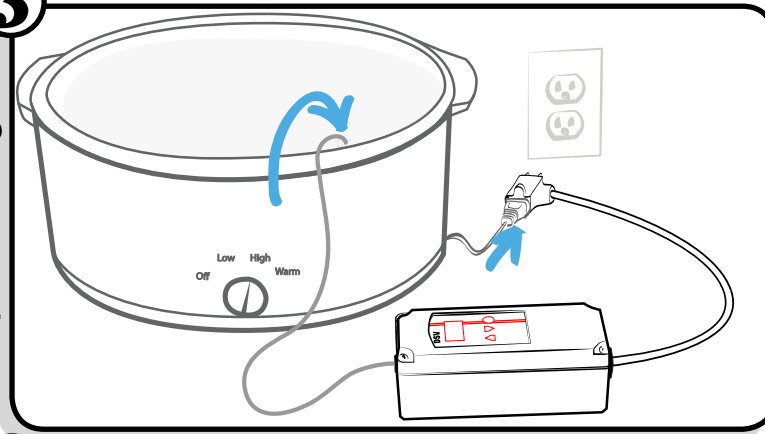
Leave some room!

This will prevent the water-bath from overflowing when food is added.

3

Plug water-bath into DSV.

Submerge DSV probe in water-bath.



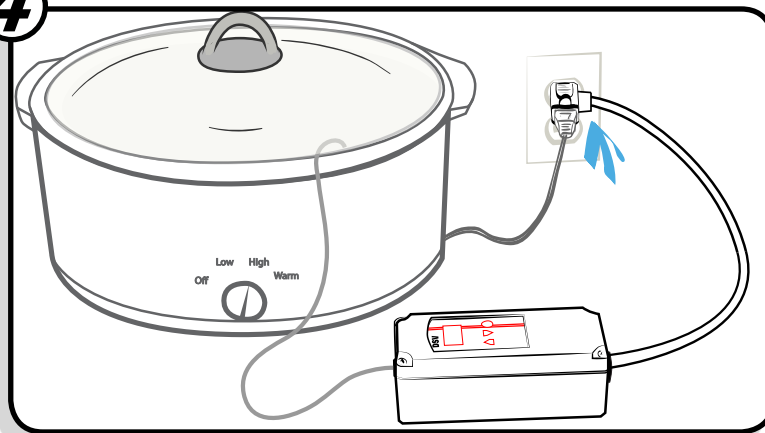
Note:

If using a slow-cooker, switch it to the highest setting available (commonly "High")

4

Replace lid.

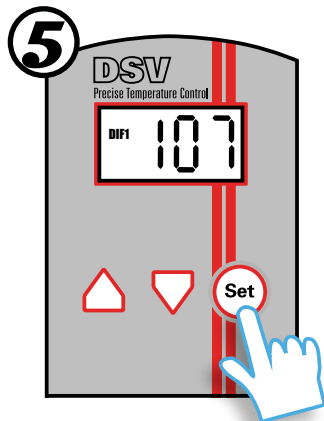
Plug DSV into power outlet.



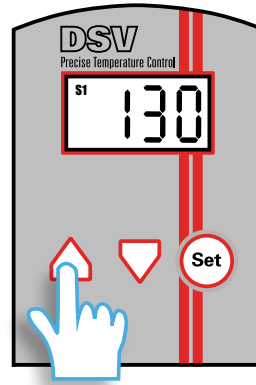
Note:

Ensure that the entire black portion of the probe is submerged, but not touching the bottom or sides of the water-bath.

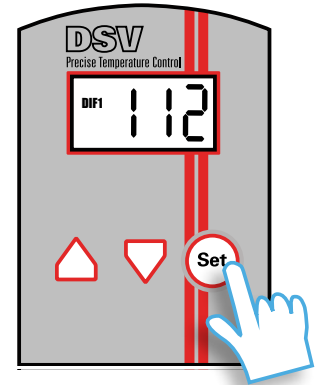
Set DSV target temperature (°F).



- DSV displays the measured temperature.
- Hold "Set" for several seconds to enter Set mode.



- Screen will blink and display "S1" to indicate that DSV is in Set mode.
- Press arrows to adjust target temperature (°F).

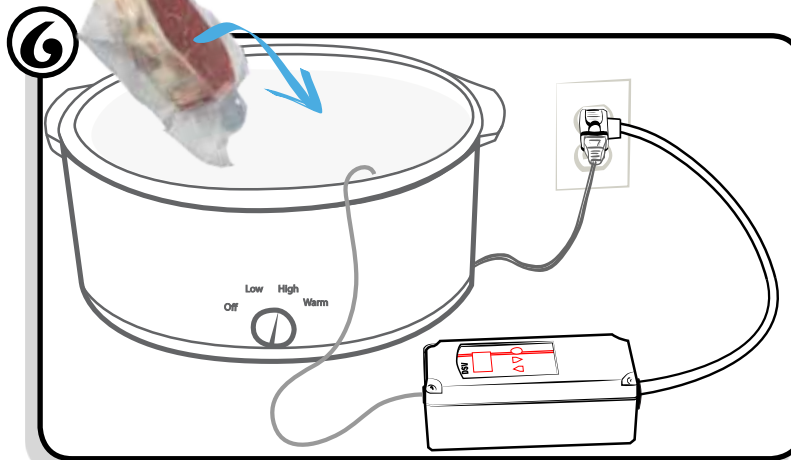


- Press "Set" to confirm the target temperature.
- DSV will return to displaying the measured temperature.

Wait for water-bath to reach target temperature.

Note:

"DIF1" indicates that the DSV is providing power to the water-bath. It is normal for "DIF1" to appear and disappear as the DSV maintains the target temperature.



Remove lid.

Add food.

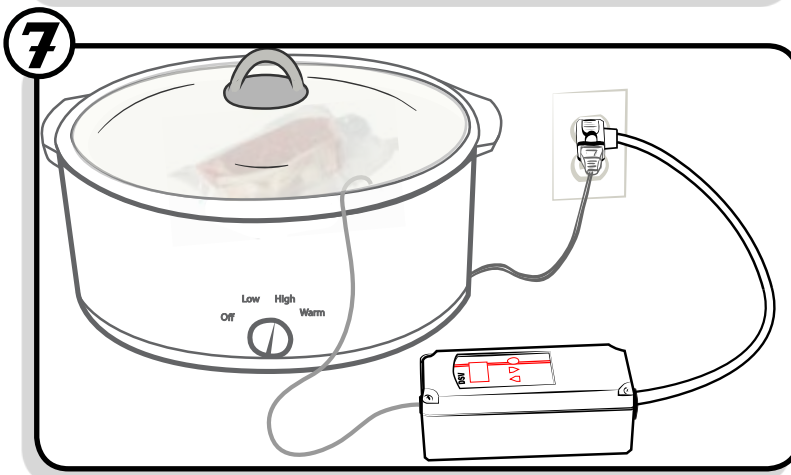
Replace lid.

Ensure food safety!

Consult a sous-vide cookbook before proceeding. Cooking times and temperatures can vary by the type, quantity, and thickness and should be obtained from a reputable source.

Wait for food cooking time to complete.

Remove food and enjoy!



Clean-up.

- Unplug DSV from power outlet.
- Remove DSV probe from water-bath.
- Unplug water-bath & empty



Use a quality thermometer!

Confirm that the internal temperature of your food meets safety guidelines prior to serving.
www.fsis.usda.gov/Is_It_Done_Yet/

Need Help?

Email support@dorkfood.com or visit www.dorkfood.com.

facebook.com/Dorkfood

[@Dorkfood](https://twitter.com/Dorkfood)